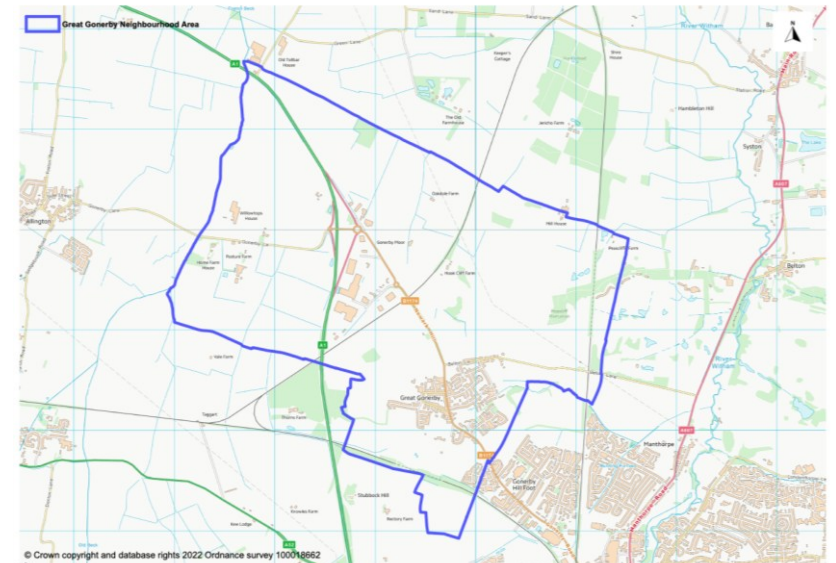


# Great Gonerby Neighbourhood Plan

---

Next Steps



# Basics...

---

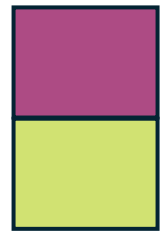
- The Neighbourhood Plan must be consistent with:
  - national planning policy – mostly in the National Planning Policy Framework (NPPF); and
  - the Local Plan’s strategic policies.
- It must also:
  - be based on up-to-date “evidence” ;
  - help to achieve sustainable development; and
  - be compatible with human rights, habitat protection and environmental obligations.

# Basics...

---

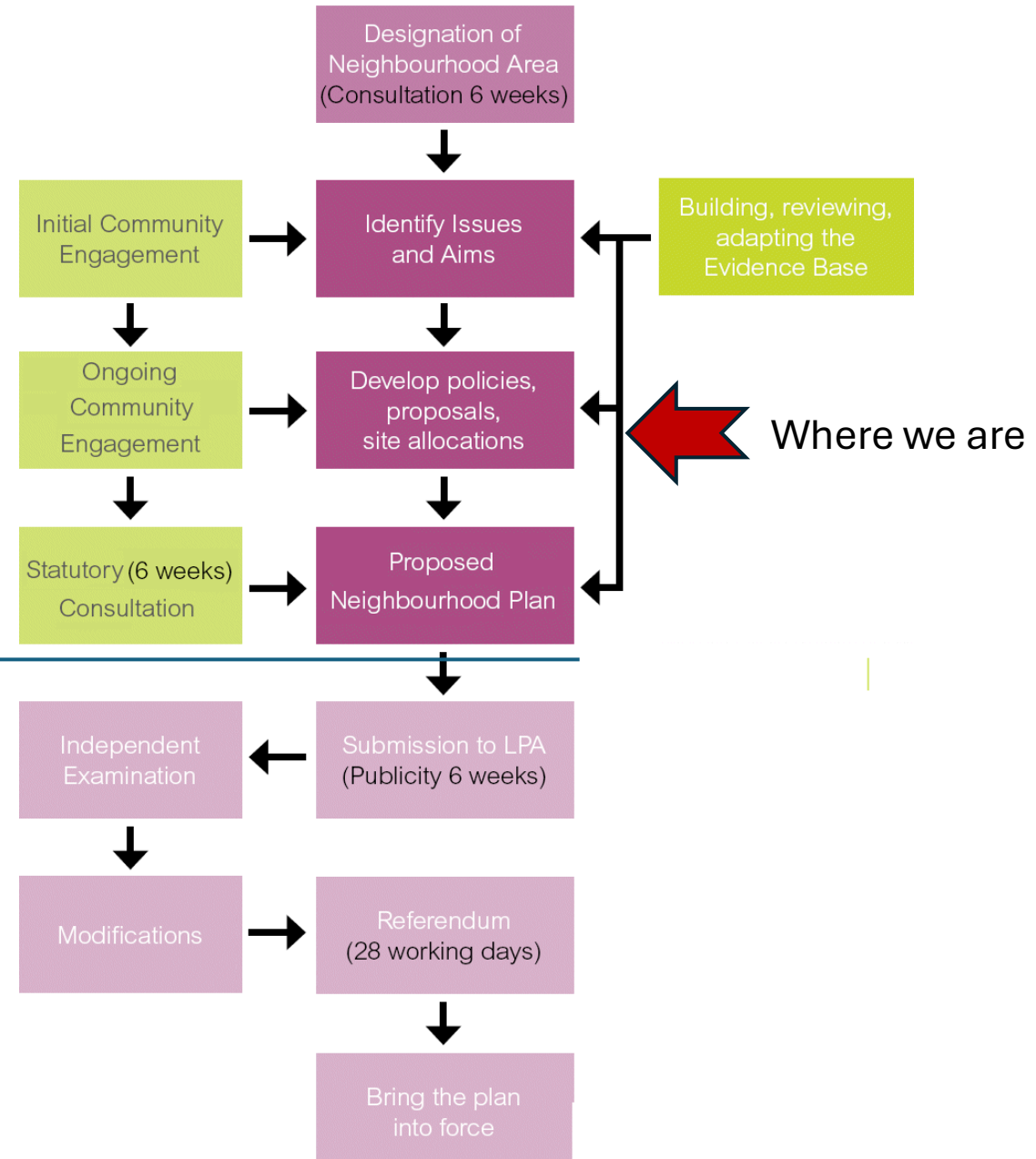
- Gt Gonerby's Neighbourhood Plan will be part of the "Development Plan", alongside the South Kesteven Local Plan.
- It will carry significant weight when planning applications are being decided.
- Community involvement is crucial.

# The Plan-Making Process



The neighbourhood plan team and parish lead on these...

The District Council leads on these...



# Preparing the Neighbourhood Plan (Phases 1 & 2)

So far, the focus has been on:

- building the “evidence base”, i.e. facts and figures – and informed opinions - about:
  - the place;
  - the people who live here;
  - facilities and services;
  - businesses;
  - transport;
  - the local environment and ecology...

# Preparing the Neighbourhood Plan (Phases 1 & 2)

With the “evidence base” largely complete, OpenPlan is now:

- Advising on further community engagement;
- Providing guidance and support to identify, map and assess Green Infrastructure and Local Green Spaces, and Important Views;
- Recommending -
  - Vision
  - Objectives
  - Policies
- Helping to commission -
  - Design Guidance and Code
  - Housing Needs Assessment
  - Site Allocations Appraisal.

# Consulting on the Draft Neighbourhood Plan (Phase 3)

The next stage ( probably from July / August 2025) will focus on:

- Preparing the full draft Neighbourhood Plan; and then...
- Carrying out Pre-Submission Consultation (over a period of at least 6 weeks).

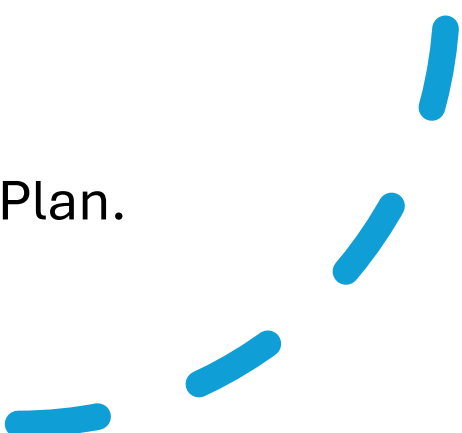
A large orange circle on the left side of the slide, partially cut off by the edge.

# Finalising the Neighbourhood Plan

The penultimate stage (probably early 2026) will focus on:

- Considering comments on the Pre-Submission Consultation;
- Making any necessary changes;
- Submitting the Neighbourhood Plan and accompanying statements to SKDC.

SKDC will then be responsible for the final steps, including:

- Consulting on the submitted Neighbourhood Plan
  - Independent Examination
  - Referendum
  - Formal adoption of the Neighbourhood Plan.
- 
- A series of blue curved lines in the bottom right corner, resembling a stylized 'd' or a decorative flourish.